

coax magazine

art & design



[all new](#)

[art](#)

[books and editions](#)

[design and architecture](#)

[destinations](#)

[event guide](#)

[exhibitions](#)

7/12/2011

DREAM PARTICLES - Janaina Tschäpe at carlier | gebauer Berlin



New York-based artist Janaina Tschäpe is back at carlier | gebauer Berlin. In her third solo show with the gallery she approaches her ever-changing microcosm in an ongoing series of re-readings and articulations as well as in multi-faceted attempts of performative approaches to the body - as an organ, a site of illegibility and mystery, of disintegration as well as of creation.

Tschäpe's early performances, her videos, photographs, sculptures, paintings and drawings are deciphering a sense of nature below the surfaces which disunite human life from that of its surroundings. Far from implying a simply idealisation of nature as man's other, Tschäpe locates one within the other and relays a worldview, which rises from the creations she mimics as much as from the formal strength of the artistic results of this mimesis. In Tschäpe's art one finds an urge of expression, which employs whatever medium necessary to articulate a sense of vicinity that is translated into a world of its own, an expanding artistic body of work.

Part of the exhibition is a new series of watercolours that condense different formats within themselves. The large scale, multi-coloured, densely filled and layered drawings are presenting their viewers with the transcriptions of a formal concentration as much as with those of a past action. Tschäpe's watercolours embody, even though their forms remain shifting and ambiguous, a sharp sense of figuration in which the question of identification and recognition are transposed by that of an indiscernible affinity.

Germano Celant remarked, that Tschäpe creates a world after the age of the cyborg, her mimetic transfigurations do not fall back into the illusion of a given, but move forward into the spectres of an expanded sense of corporeality in which the classic figure of the nude seems to be inverted, turned inside out.

(Image: Janaina Tschäpe, "untitled (Play I)", 2011, SD Card on Digital Foto Frame, 00:38 min, still, courtesy: the artist and carlier | gebauer, Berlin)

Janaina Tschäpe -Dream Particles
through 30 July
Carlier Gebauer Berlin
Markgrafenstrasse 67
www.carliergebauer.com



Labels: all new, art, exhibitions

EVENT GUIDE

Openings, Performance, Talks

14THU 12:00-20:00

Open Doors_UDK Graduates
show their work_www.udk-berlin.de

16SAT 18:00

Opening: Sutton Lane at
Klosterfelde_www.klosterfelde.de

19TUE 22:00

Screening: film night curated by D.
Peuker at Atelierhaus
Monbijoupark_www.basedinberlin.de

21THU 22:00

Film screening: Daphna Maimon
at Atelierhaus
Monbijoupark_www.basedinberlin.de

23SAT 20:00

Concert: Klaus Theweleit and
band at Neuer Berliner
Kunstverein_www.nbk.org
>> more...

Ongoing exhibitions

Karena Schuessler Design Gallery

Kwangho

Lee_www.karenaschuessler.com

XVII. Rohkunstbau

Contemporary Art at Schloss
Marquardt_www.rohkunstbau.de

Stella&Calatrava

at Neue Nationalgalerie,
www.smb.museum

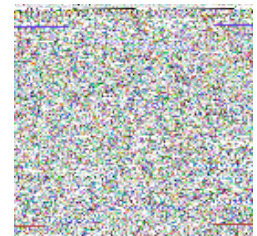
Nelly Rudin: innen ist aussen

at Mies van der Rohe Haus,
www.miesvanderrohehaus.de
>> more...

MEET US ON FLICKR

slideshows & printable guides

at flickr.com/coaxmagazine



NEWSLETTER

Sign-up for our monthly news
update.

Mail "sign-up" to
info[at]coaxmagazine.de
and enjoy!

FEEDS

Privat

Älterer Post

WE LIKE

artforum
berlindesignblog
berlin.ist
create.berlin
daz.architektur
design.miami
frieze
slowtravelberlin
venice.biennial

INDEX

..
destinations
contact | impressum